

## TRIANGLE BOX PACKAGING TEMPLATES



FOR **MORE DETAILS** PLEASE VISIT:  
[aura-print.com/uk/triangular-box-packaging-printing](http://aura-print.com/uk/triangular-box-packaging-printing)



### WHY NOT **LET US DESIGN** YOUR ARTWORK?

If you're struggling for inspiration or simply time, we offer a fast and very competitive design service.



[info@aura-print.com](mailto:info@aura-print.com)



01484 429300



[aura-print.com](http://aura-print.com)

#### **ARTWORK SPECIFICATIONS**

Artwork to be supplied at no less than 300dpi at 100% scale. Supplied as PDF, JPEG or TIFF in CMYK colour range. Please do not use any spot colours or any special colours.

#### **DON'T STRUGGLE**

If you're not 100% sure on how to design from this template we have designers in house who can create your design for you. It's well worth getting it right and having that extra peace of mind (You also get to put your feet up!).



#### **BLEED ZONE**

This area will be cut off your artwork. Make your background continue into this zone to allow for tolerances.



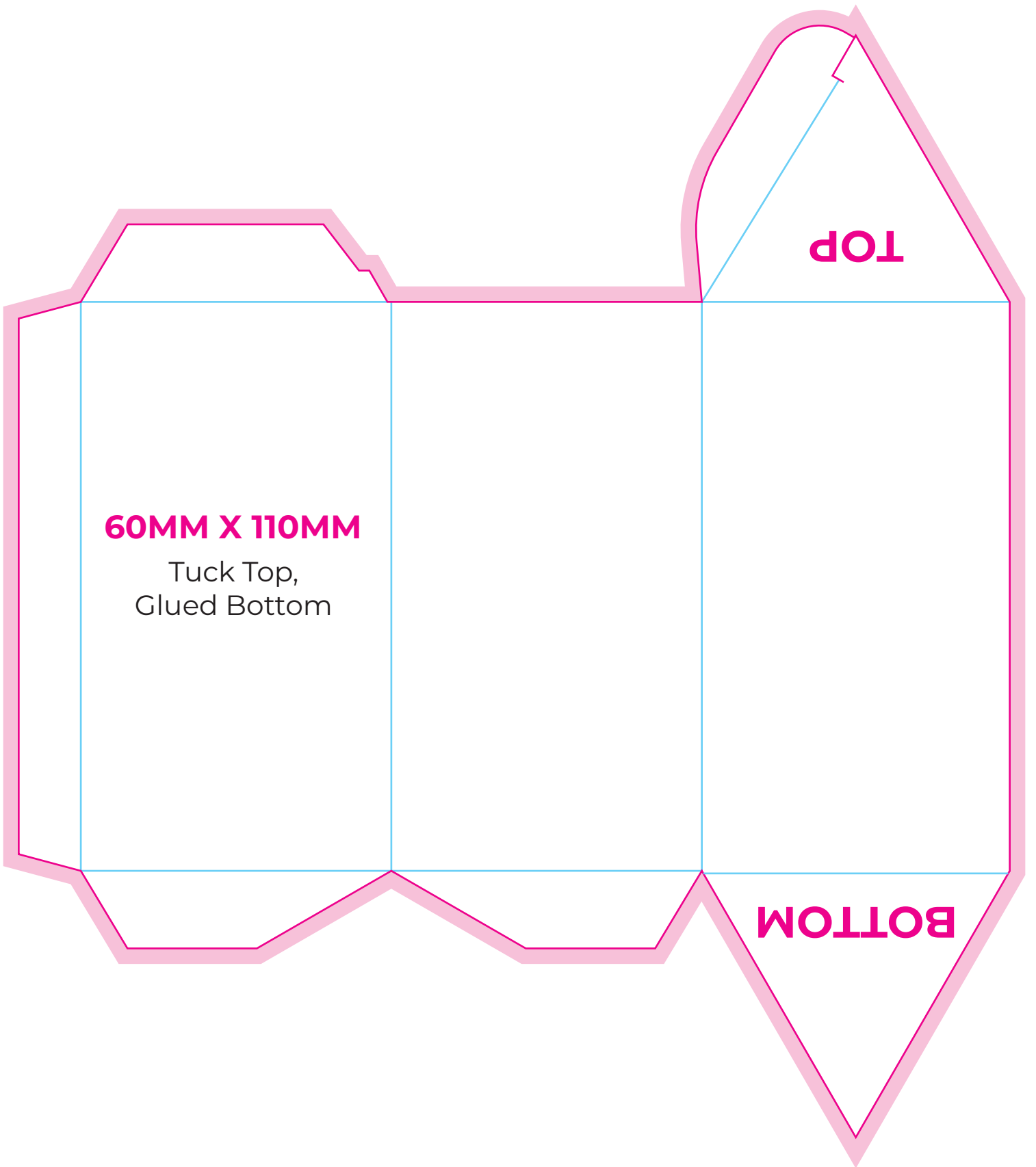
#### **TRIM LINE**

This is where we'll cut your design



#### **SAFE ZONE**

Keep all your details, logos, text, etc inside this zone. Not including your background.

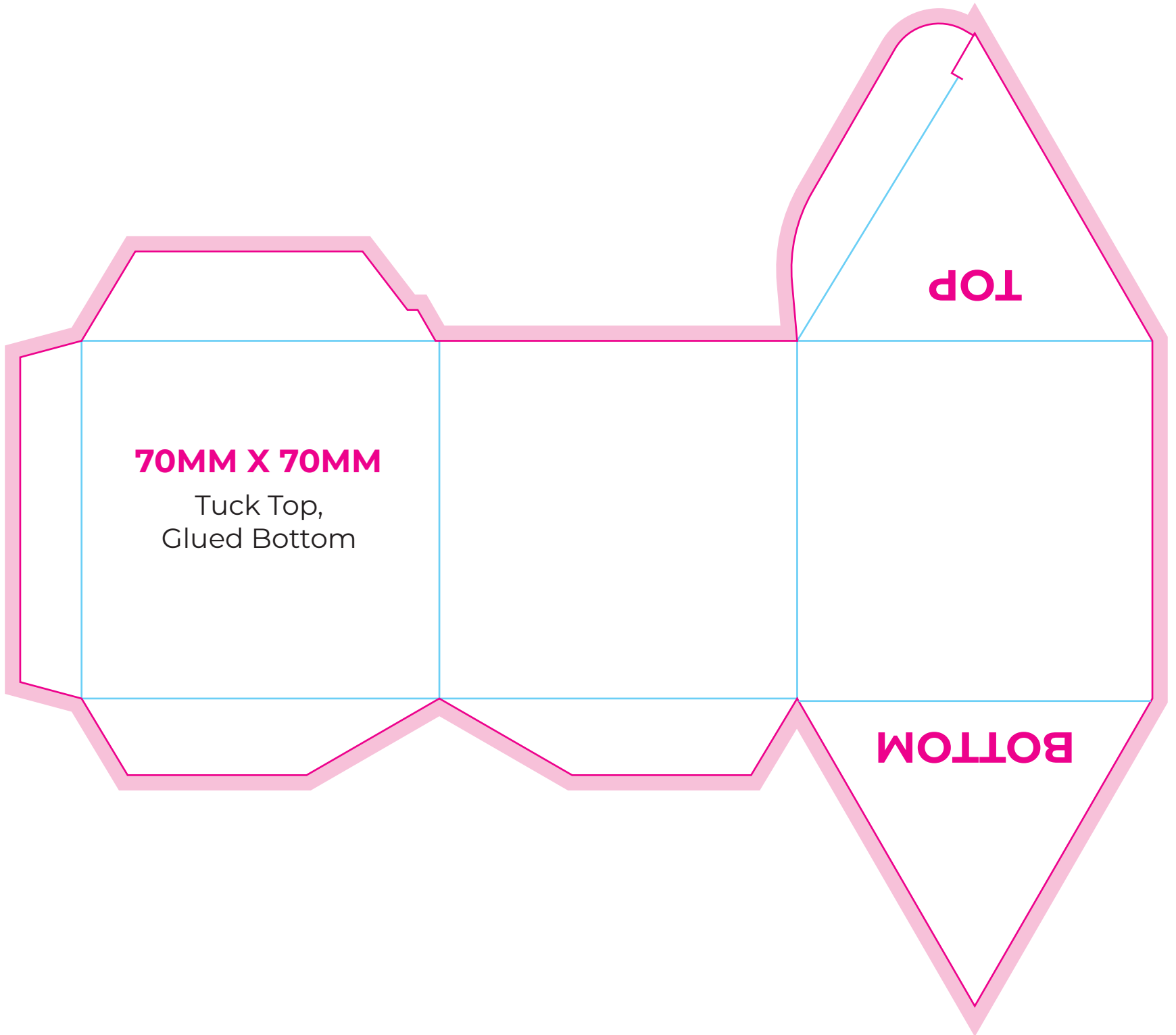


**TOP**

**60MM X 110MM**

Tuck Top,  
Glued Bottom

**BOTTOM**

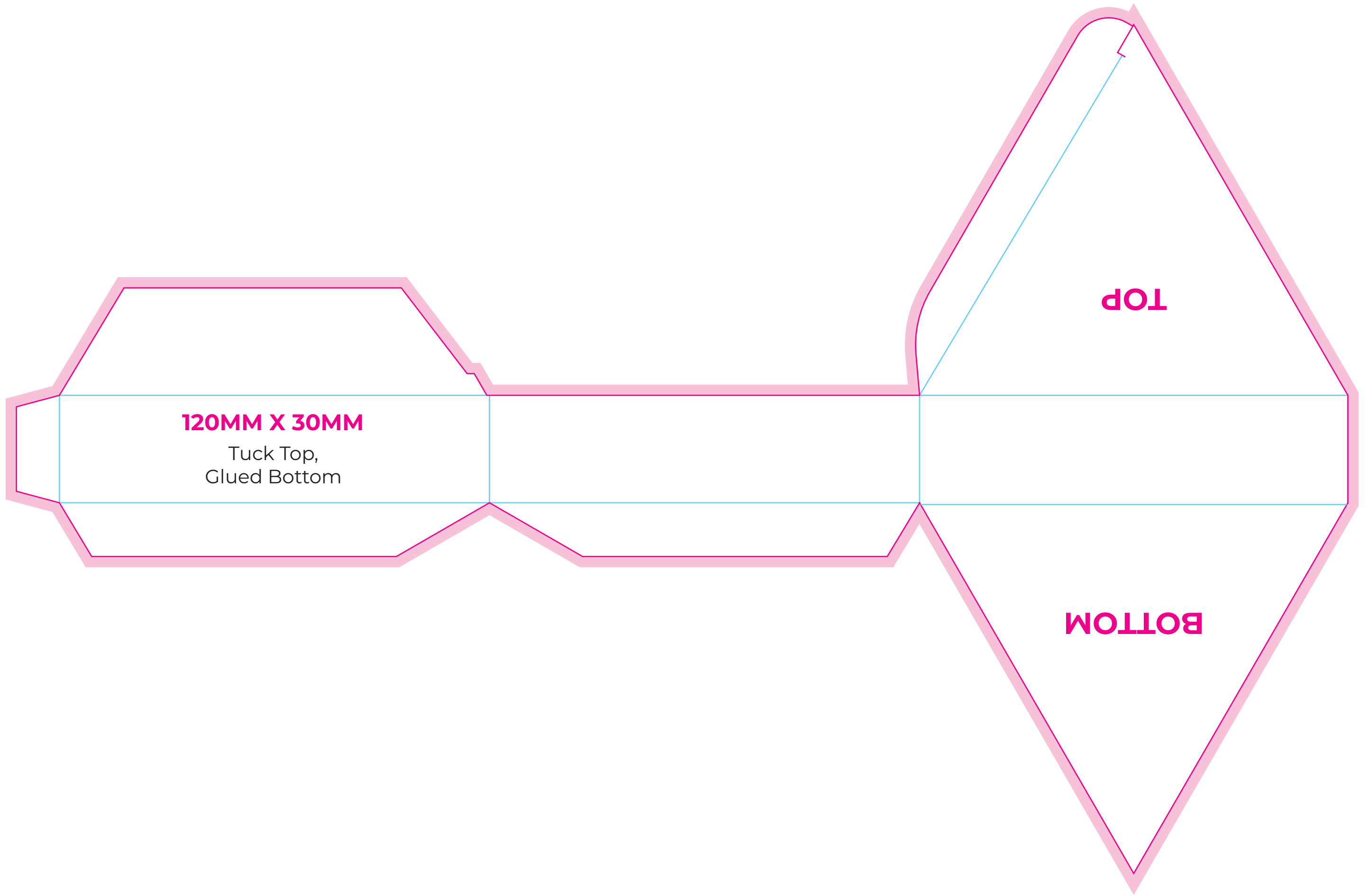


**70MM X 70MM**

Tuck Top,  
Glued Bottom

**TOP**

**BOTTOM**

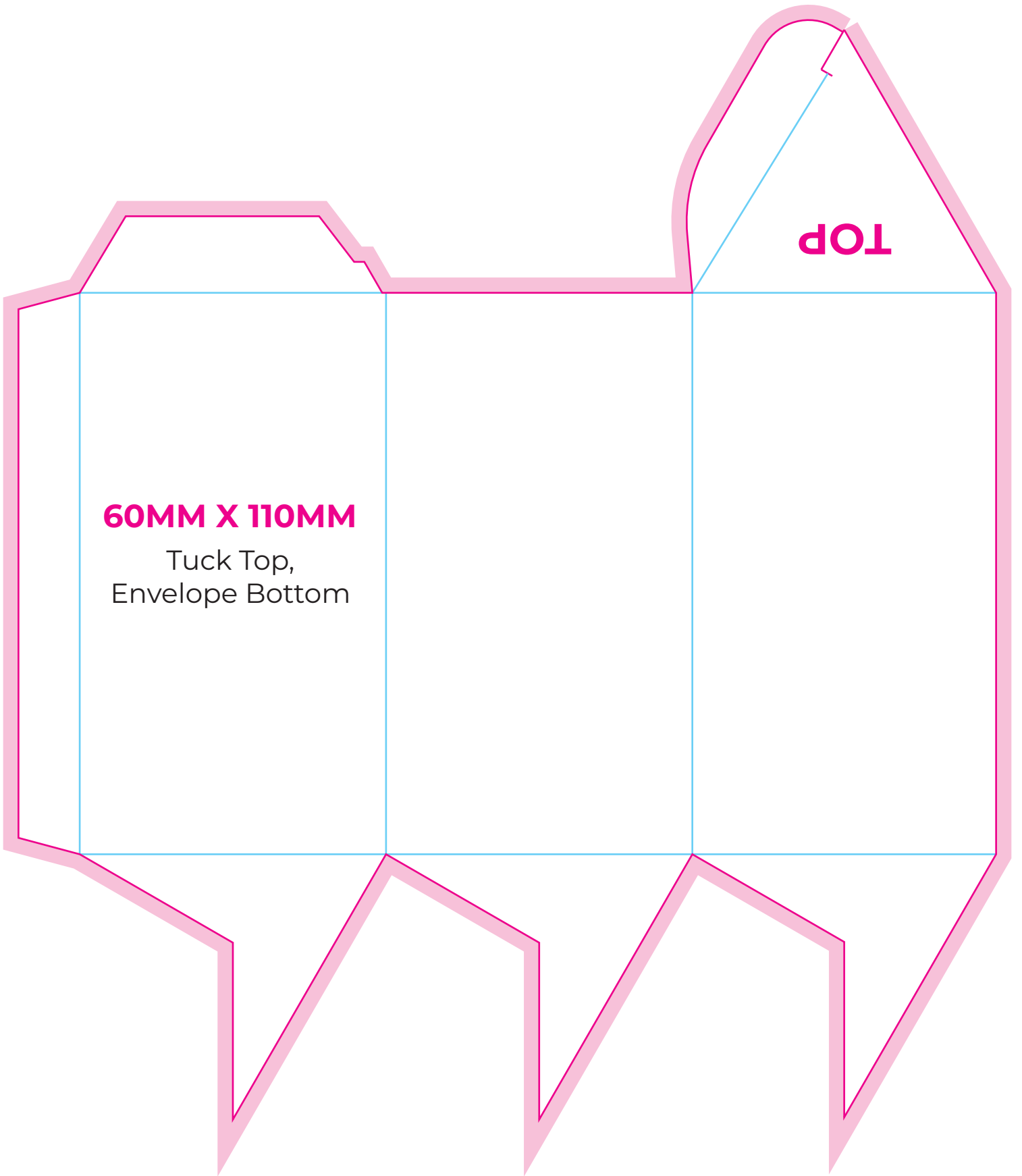


**120MM X 30MM**

Tuck Top,  
Glued Bottom

**TOP**

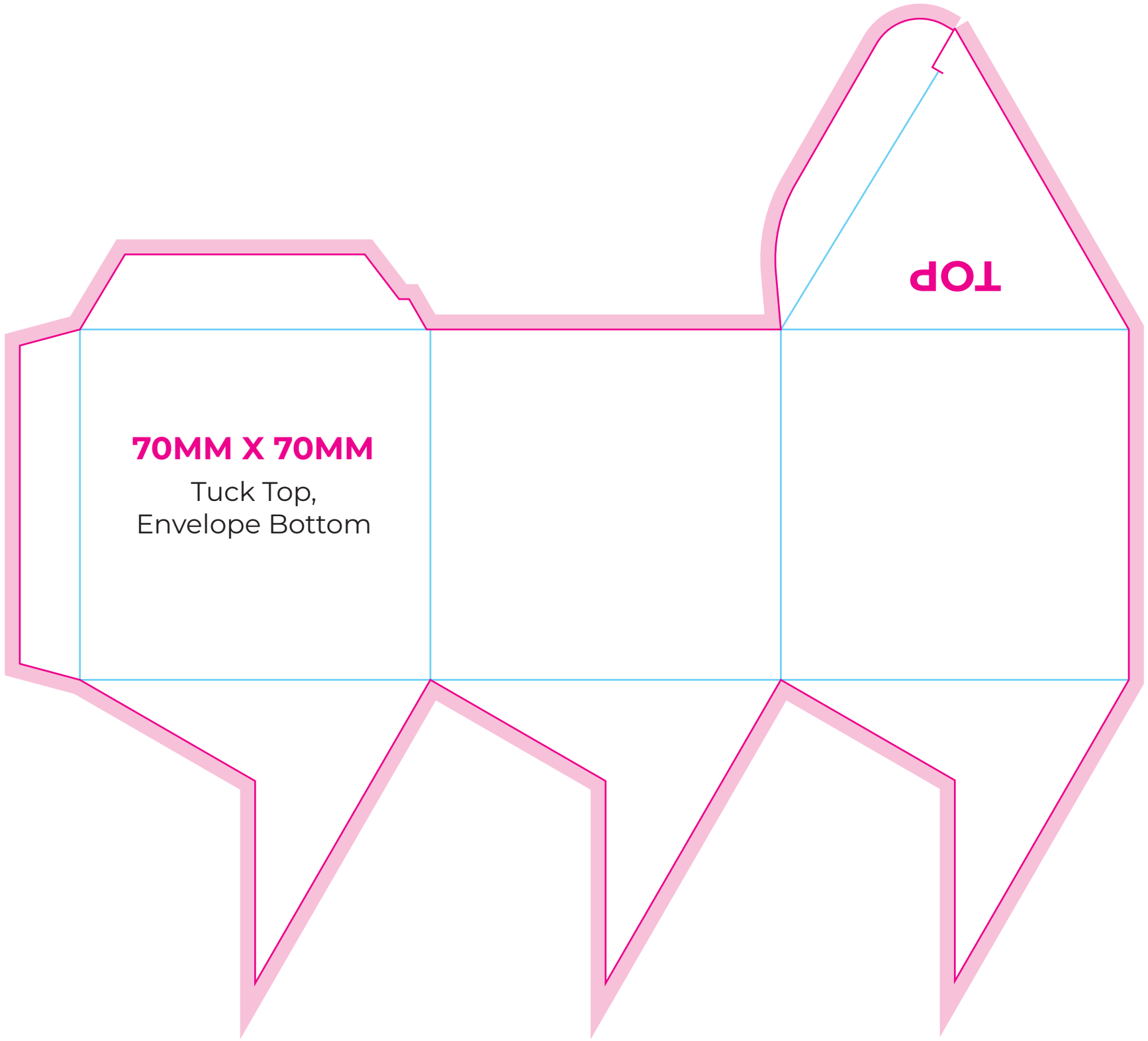
**BOTTOM**



**60MM X 110MM**

Tuck Top,  
Envelope Bottom

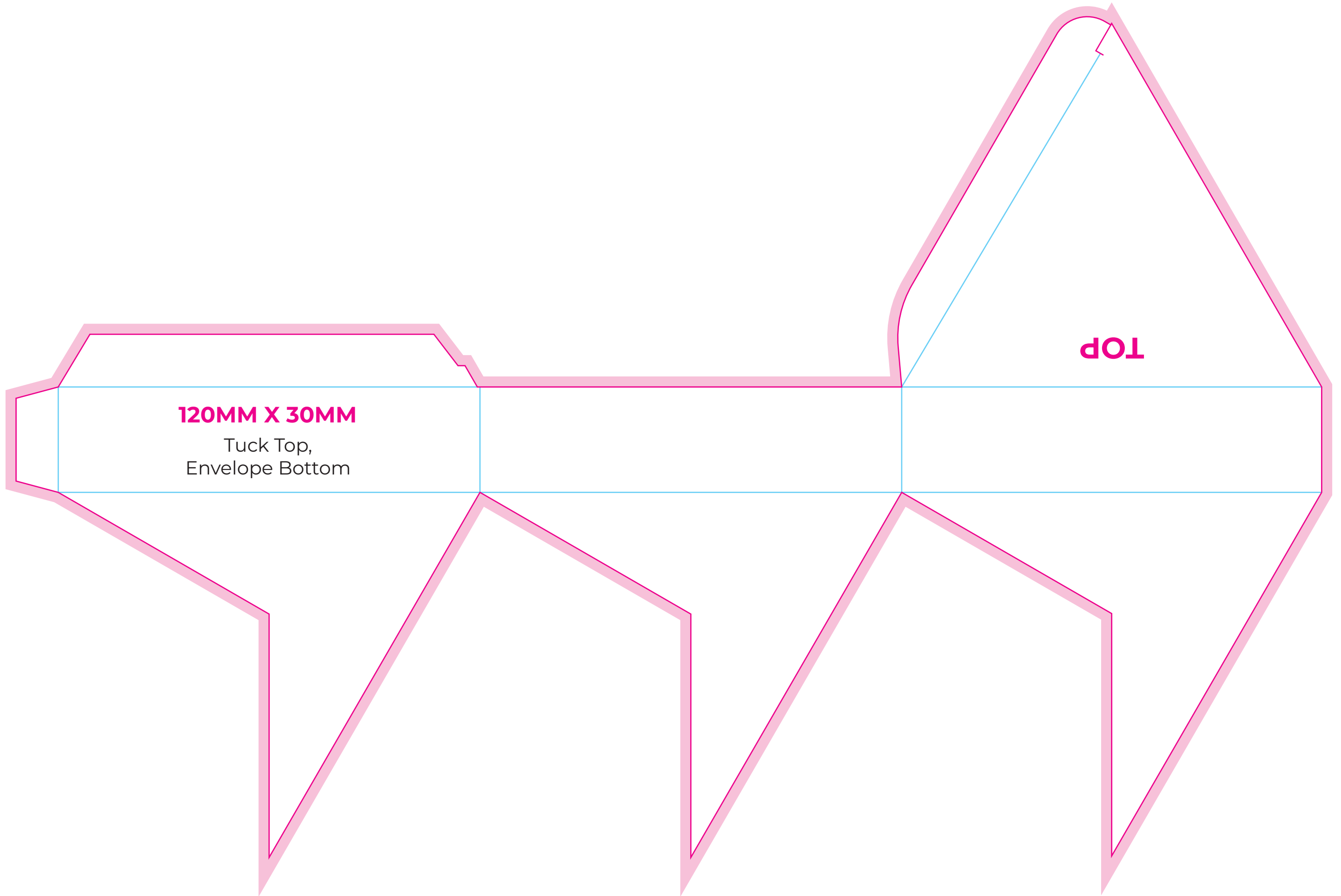
**TOP**



**70MM X 70MM**

Tuck Top,  
Envelope Bottom

**TOP**



**120MM X 30MM**

Tuck Top,  
Envelope Bottom

**TOP**